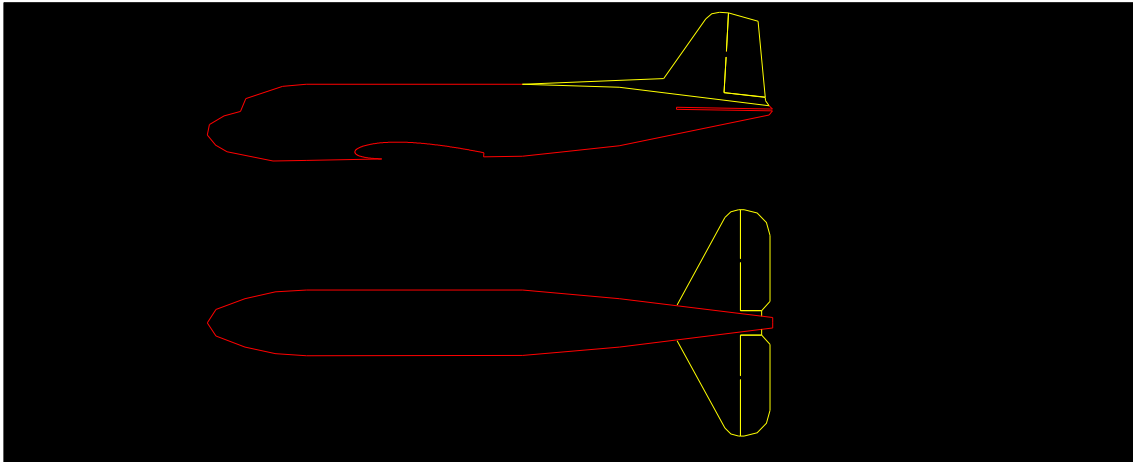


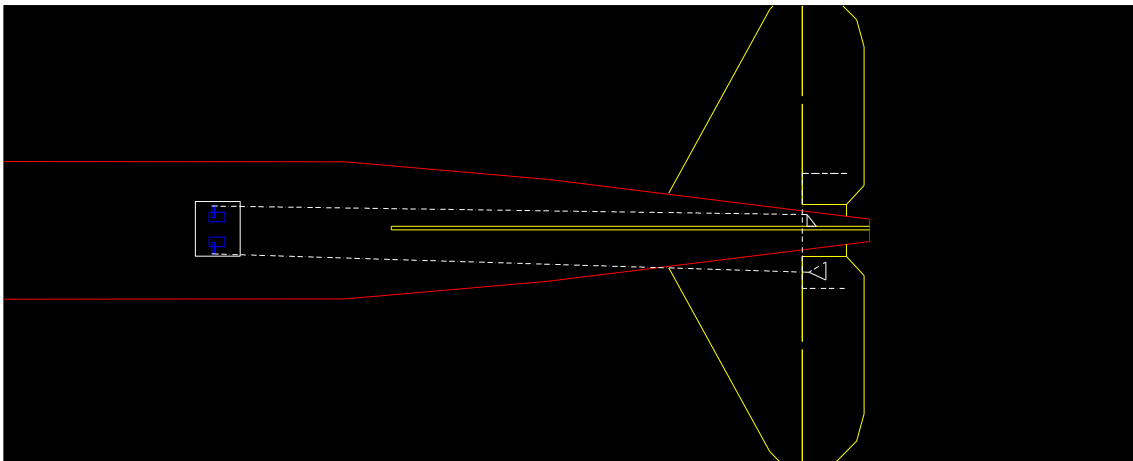
Esquema de montagem Douglas DC3 MR modelismo.

Primeira etapa, colagem do leme e profundor:

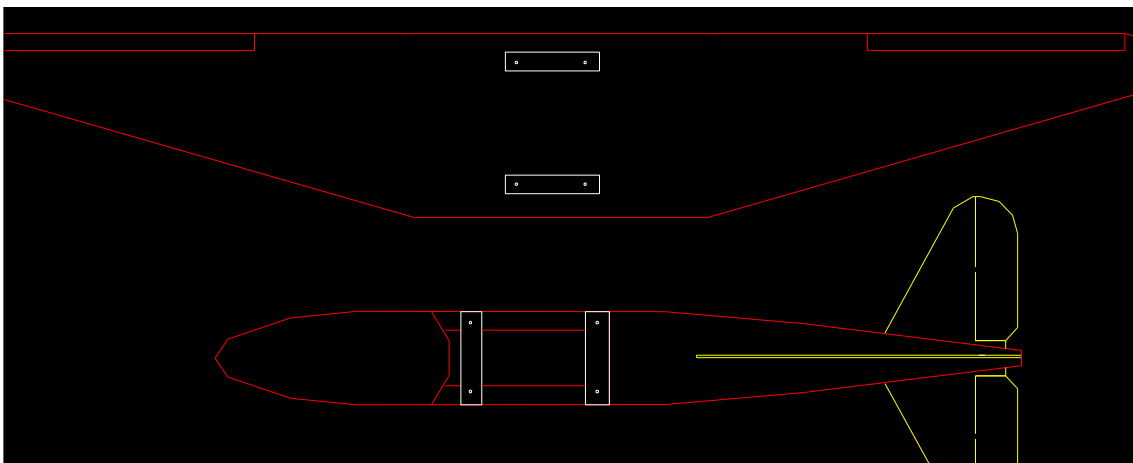


Segunda etapa colocação dos servos leme e profundor e linkagem:

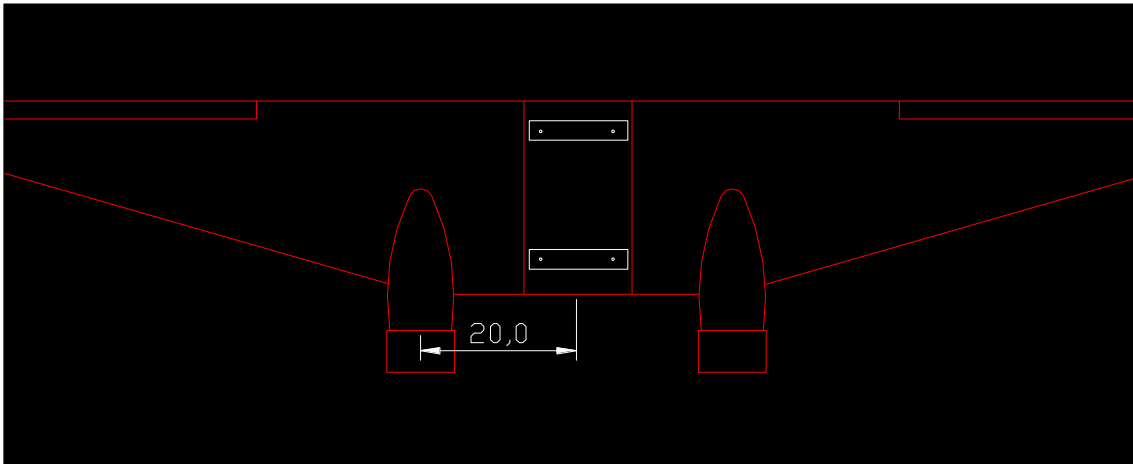
Para ligar um comando ao outro usa uma liga de aço, do arame de linkagem, fazendo um U



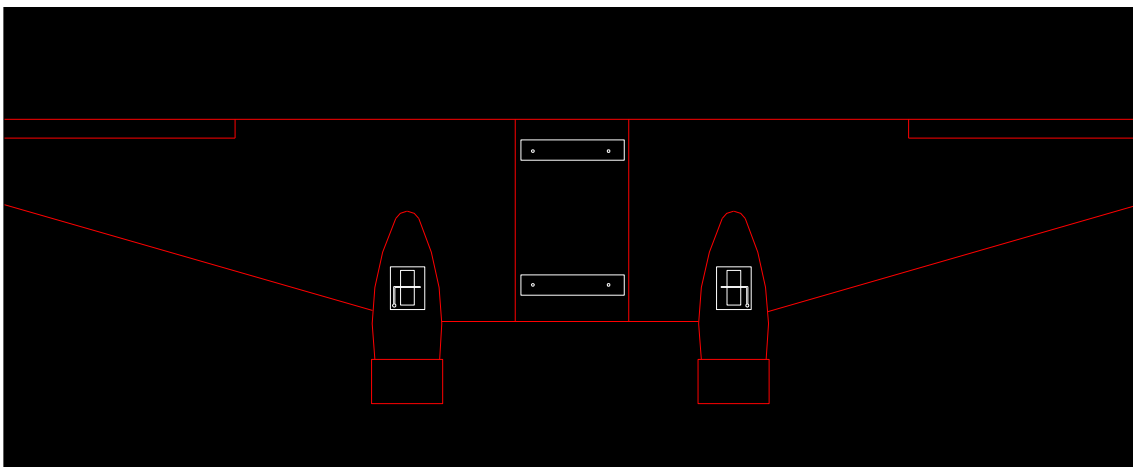
Terceira etapa, fixação da asa na fuselagem.



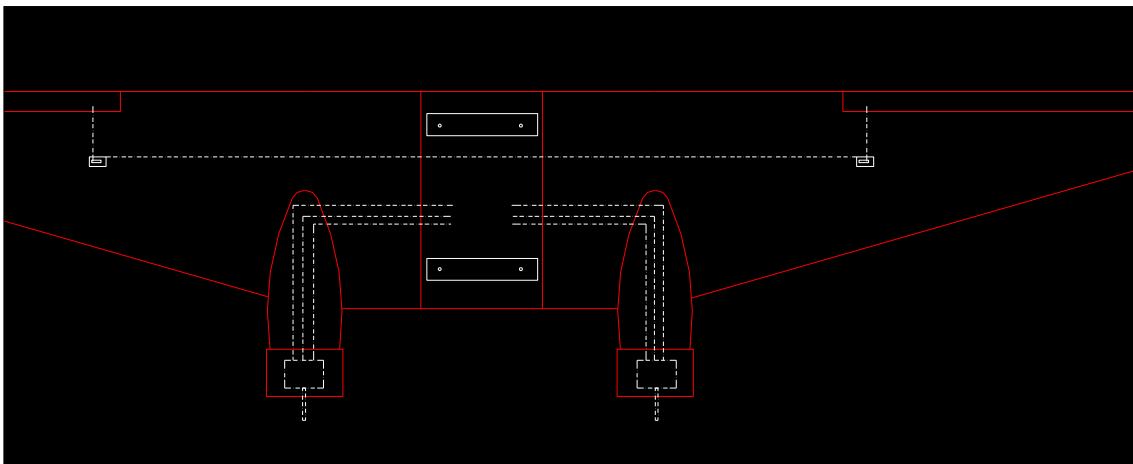
Fixação dos motores:



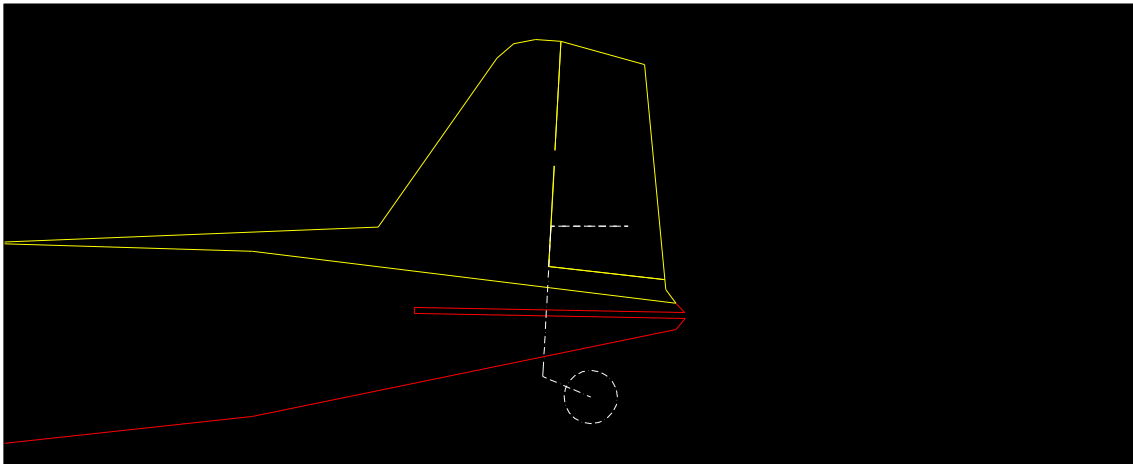
Fixação trem de pouso:



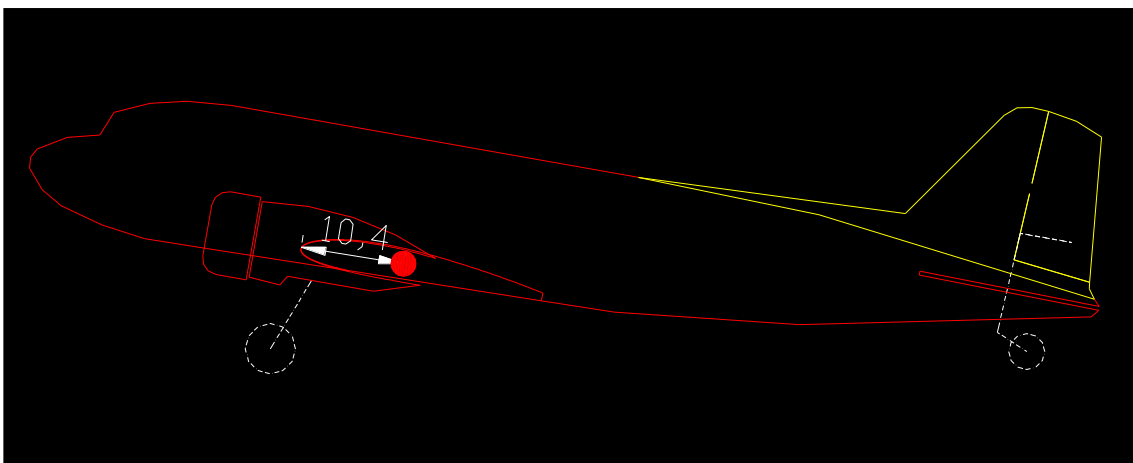
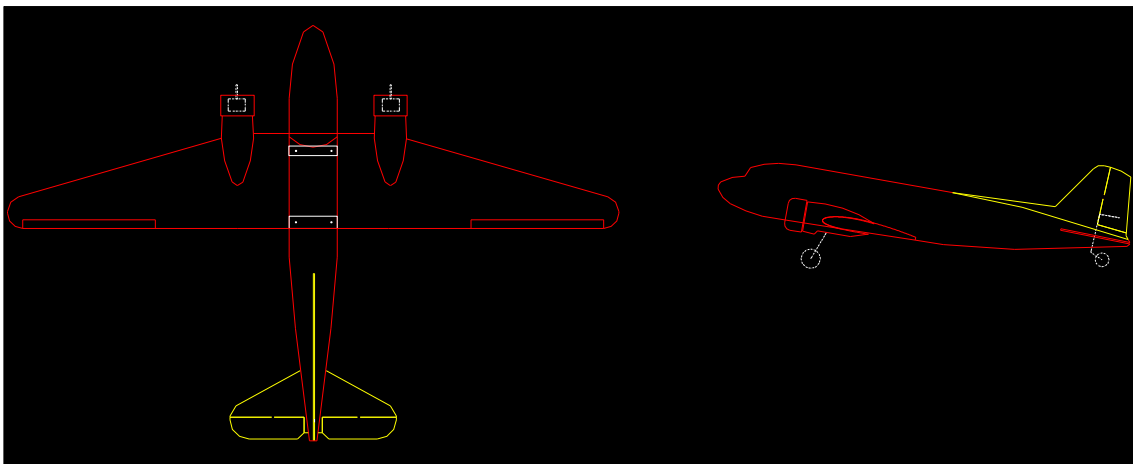
Fixação dos servos na asa e motores e fios:



Fixação da bequilha no leme:



Montado e CG:



Bons vôos.